



Transport
Roads & Maritime
Services

TMC Presentation: Compliance and Enforcement in NSW

Monday 26 October 2015

Brett Patterson, Principal Manager, Enforcement Operations



every journey matters

Today's agenda

- The compliance task
- Inspections carried out
- Operations results
- AUSTRANS
- Compliance inspections and mechanical issues
- Distribution centres
- Industry engagement and education
- Future operations



The Compliance Task!

- The purpose of Roads and Maritime is to enable safe and efficient journeys throughout NSW
- In striving to achieve this purpose Roads and Maritime are targeting all in the chain of responsibility.
- Reducing crash in all forms, most importantly injury, serious injury and fatal crashes and the associated costs to society. Standing around some \$6 billion per year.



Inspections carried out

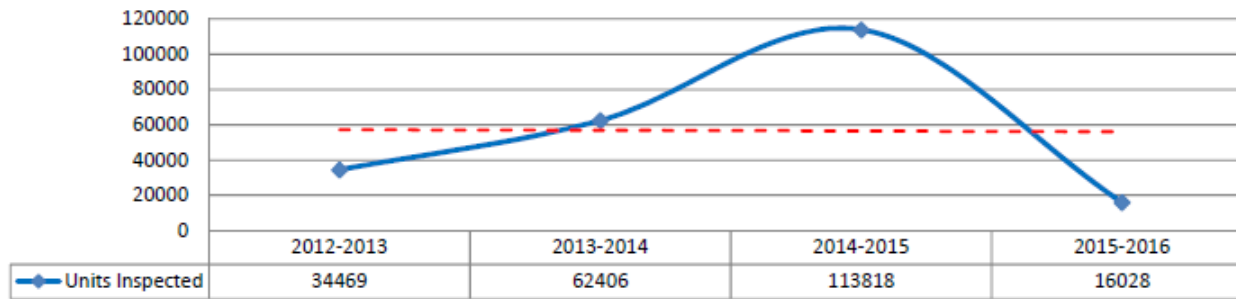
- 2014/2015 heavy vehicle inspections included:
 - On-road enforcement: 63,358 (107,216 units)
 - Heavy Vehicle Safety Stations: 119,358 intercepts (233,915 units)
 - Inter Agency: 60,874 (123,322 units)
 - Heavy Vehicle Inspection Stations: 89,592
 - **TOTAL -around 554,000 units inspected through all our safety road enforcement campaigns.**

Heavy vehicle operations results

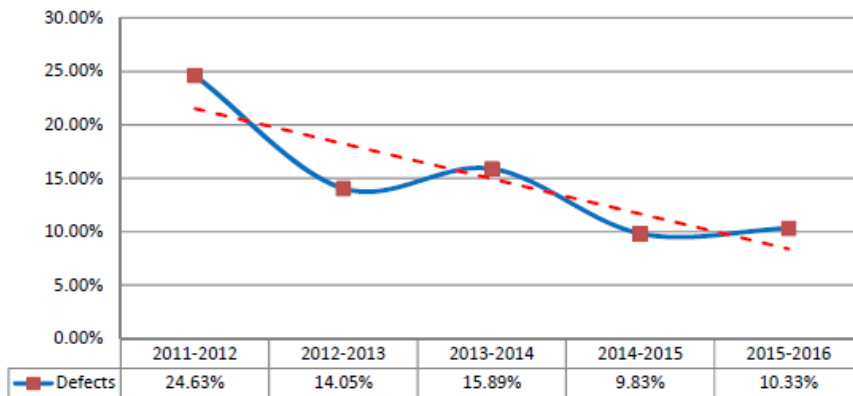
HEAVY VEHICLE OPERATION RESULTS - FINANCIAL YEAR (% TREND COMPARISONS)													
FIN YEAR	Intercepts	Units Inspected	Defects	FW	Minor	Major	Maj Grounded	TINs/PINs	Breach	ECM DL	ECM NC	Drug Tests	Drug +
2011-2012	258	337	83	1	74	8	0	48	6	79	30	1160	14
			24.63%	1.20%	89.16%	9.64%	0.00%	18.60%	2.33%	30.62%	37.97%	449.61%	1.21%
2012-2013	33868	34469	4844	1410	2753	639	42	2233	2202	877	143	2374	15
			14.05%	29.11%	56.83%	13.19%	0.87%	6.59%	6.50%	2.59%	16.31%	7.01%	0.63%
2013-2014	50583	62406	9918	937	7397	1507	77	5007	1074	2124	234	5378	58
			15.89%	9.45%	74.58%	15.19%	0.78%	9.90%	2.12%	4.20%	11.02%	10.63%	1.08%
2014-2015	68228	113818	11184	411	9097	1502	142	6113	2121	2343	325	7902	105
			9.83%	3.67%	81.34%	13.43%	1.27%	8.96%	3.11%	3.43%	13.87%	11.58%	1.33%
2015-2016	8411	16028	1655	65	1349	234	7	406	280	202	32	234	6
			10.33%	3.93%	81.51%	14.14%	0.42%	4.83%	3.33%	2.40%	15.84%	2.78%	2.56%
	161348	227058	27684	2824	20670	3890	268	13807	5683	5625	764	17048	198
			12.19%	10.20%	74.66%	14.05%	0.97%	6.08%	2.50%	3.49%	13.58%	10.57%	1.16%

Heavy vehicle operations results

UNITS INSPECTED (2012/13-2015/16)



DEFECTS (2011/12 - 2014/15) ANNUAL % TRENDS



Comparison AUSTRANS: 2013 - 2015

Operation	Intercepts	Units Insp	Defects	% Defects	TIN/PINs	% TINs/PINs	Breach	% Breach	ECM DL	ECM NC	% ECM Non-comply	Drug	Drug +	% Drugs +
Austrans 2013	30748	30748	4174	14%	1803	6%	2142	7%	423	75	18%	1092	12	1.1%
Austrans 2014	43582	50084	7204	14%	3339	7%	841	2%	879	79	9%	3105	26	0.8%
Austrans 2015	39240	58238	4360	7%	2554	4%	832	1%	707	90	13%	3124	45	1.4%

Operator compliance inspections

- 68 operator compliance assurance inspections



Distribution Centres (DCs)

- We are now taking our enforcement off-road
- 30 DCs have been targeted since 2013
- 17 DCs have been targeted this year alone



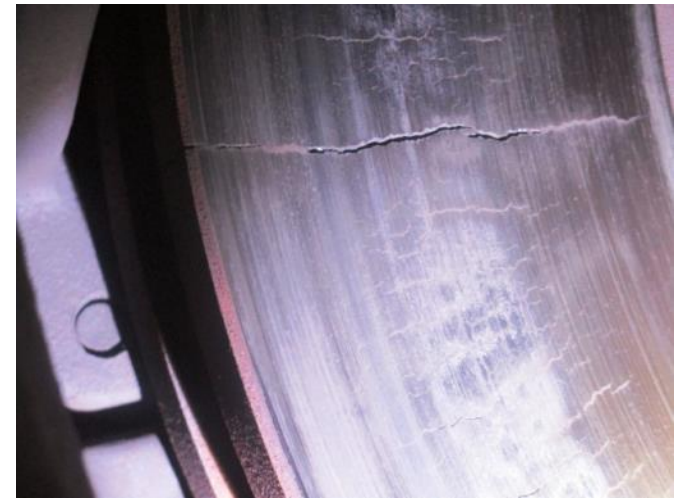
Mechanical Issues: Brakes

- Example of poorly maintained brakes



Brakes non compliance:

- Cracked brake drums and brake rotors



Mechanical Issues- Brakes



Mechanical issues: Brakes



Mechanical issues: Wheels not retained



Mechanical Issues: Tyre Faults



Mechanical issues: Fuel leaks



Mechanical issues: Gear box falling out



Industry engagement and education



Future operations

Compliance operations will continue to focus on **load restraint, mass, dimension, fatigue, speed (non compliance) vehicle roadworthiness and unfair commercial pressures.**

A new focus is now on distribution centres. This is where any heavy vehicle is loaded or unloaded. All in the chain of responsibility will be tested and if necessary held accountable

