



Andrew Archibald

*Department of Transport and Main
Roads*

Senior Transport Inspector



What Inspectors See

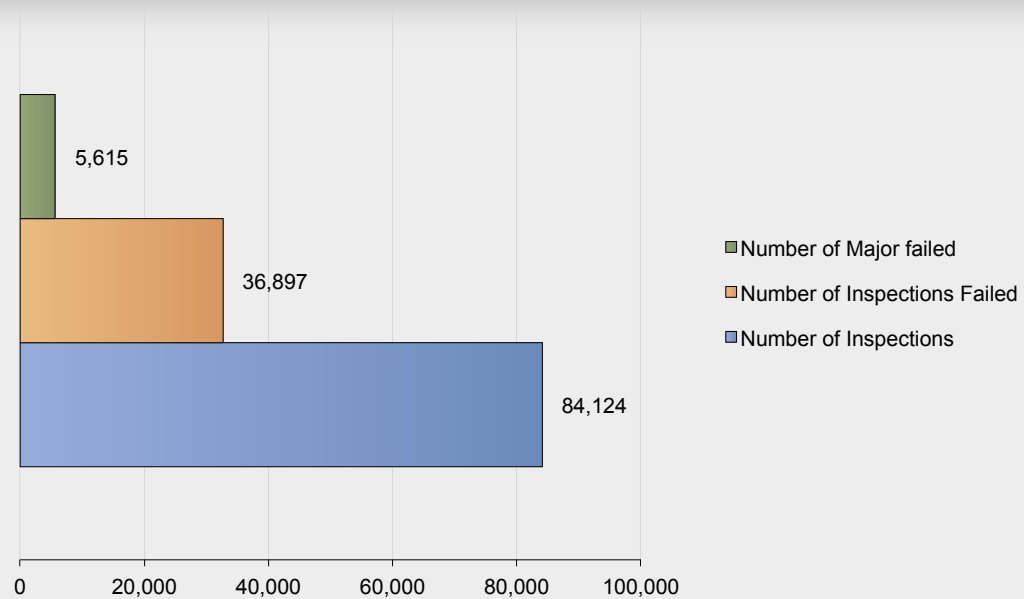


Programmed Vehicle Inspections 2014

5,615 = 15% Classified Major

36,897 = 43% Failed

84,124 Vehicles Inspected

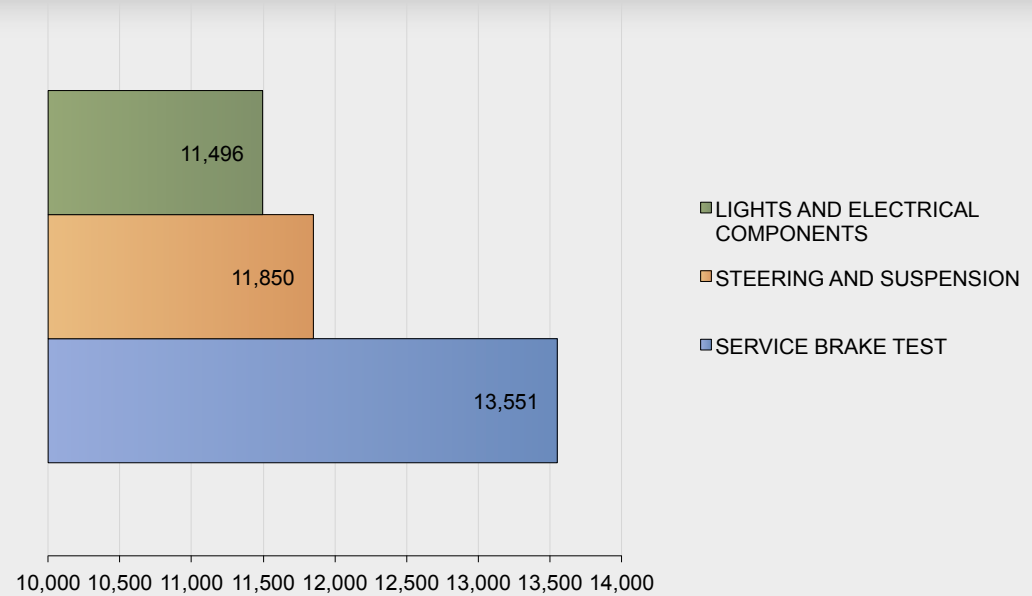


Top 3 Defects

11,496 = 31% Lights and Electrical

11,850 = 32% Steering and Suspension

13,551 = 36% Service Brakes

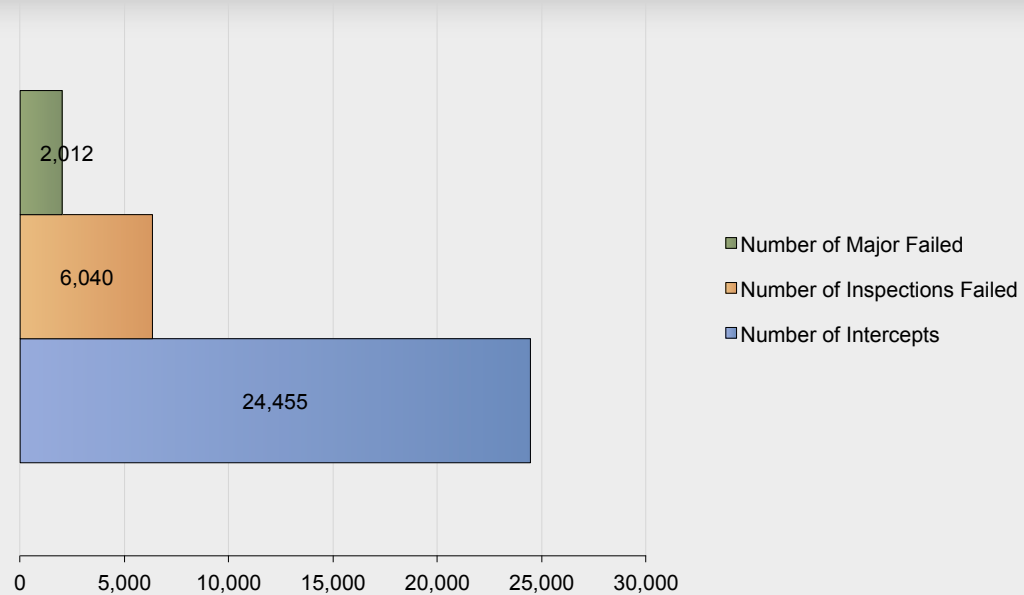


Road Patrol

2,012 = 33% Classified Major

6,040 = 24% Failed

24,455 Vehicles Inspected

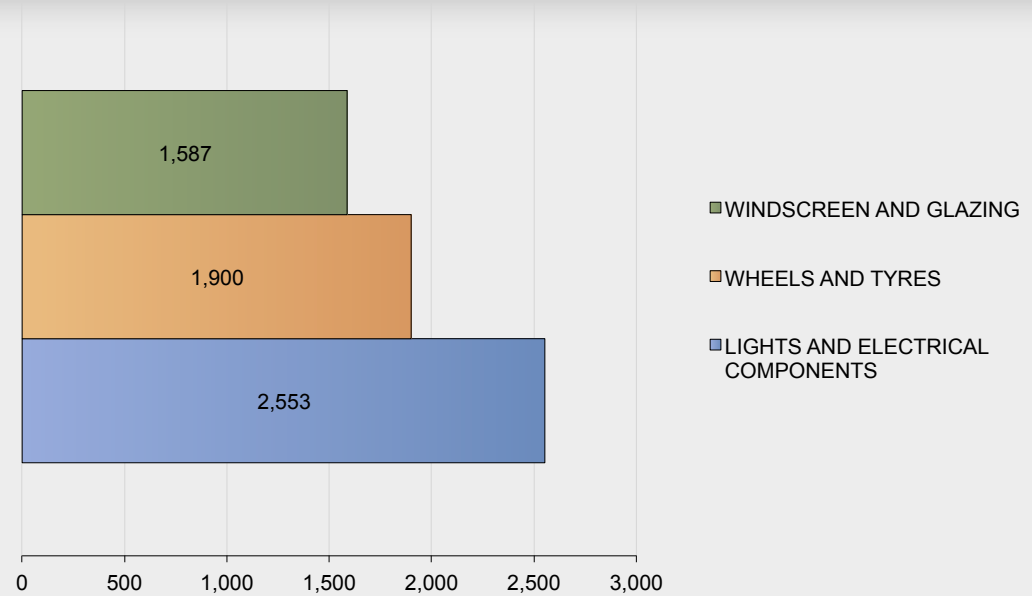


Top 3 Defects

1,587 = 26% Windscreen and Glazing

1,900 = 31% Wheels and Tyres

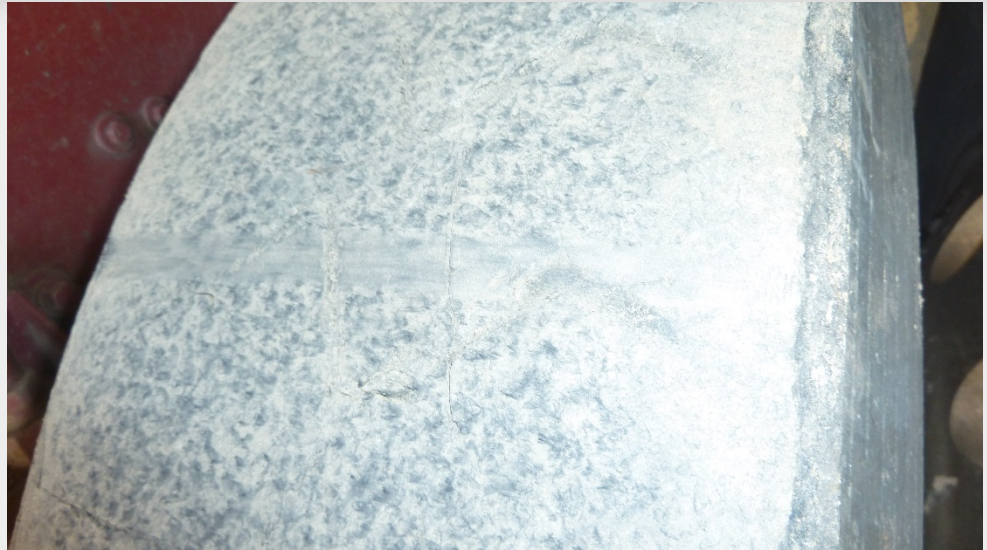
2,553 = 42% Lights and Electrical













DEPARTMENT OF TRANSPORT AND MAIN ROADS

Customer Services Branch Compliance Plan

