

Trailer EBS – Diagnostics & Field Support

Peter Verde

Knorr-Bremse Australia



•Contents:

•0: System Recognition & Requirements

•1: ECU Talk – TEBS G2

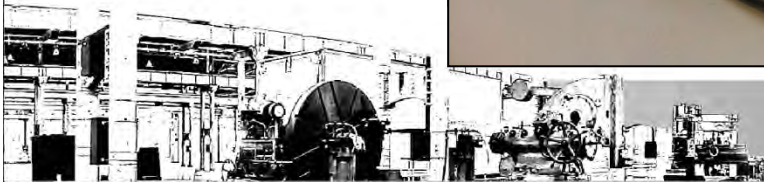
•2: TDR Interpreter – TIM G2

•3: Field Support

•4: Safety Direct

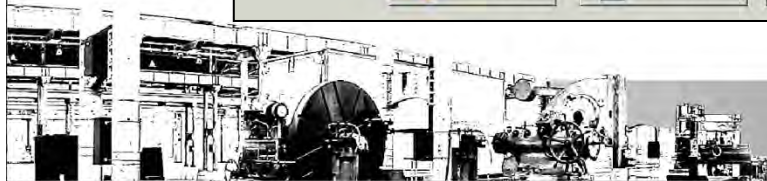


0: System Recognition & Requirements



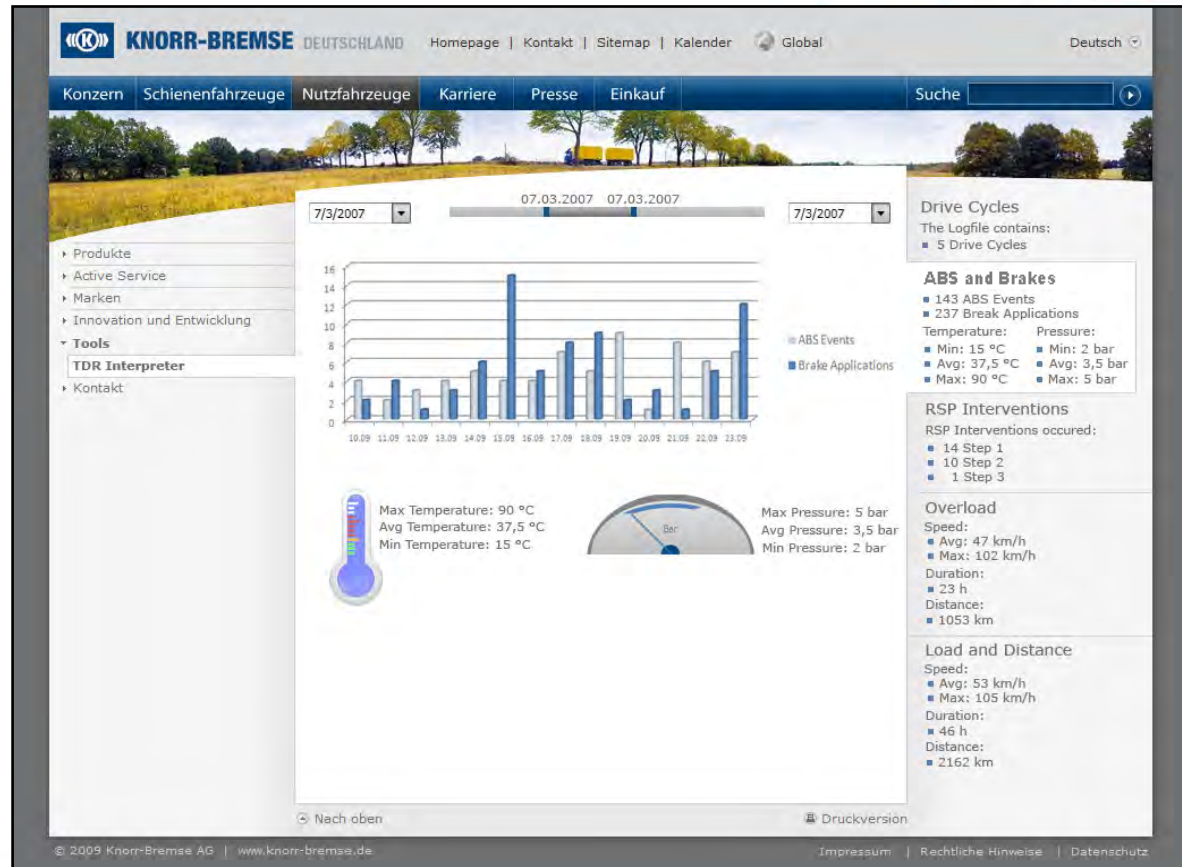
1: ECU Talk– TEBS G2

Resettable Operational Data		Permanent Operational Data	
Load information Front axle group load [kg]: - Rear axle group load [kg]: 17394	Reservoir pressure Number of times the pressure exceeded 9.0 bar: 50 Distance stamp: 50	Load information Front axle group load [kg]: - Rear axle group load [kg]: 17394	Reservoir pressure Number of times the pressure exceeded 9.0 bar: 100 Distance stamp: 100
Brake application counter Applications below 1.5 bar: 50 Applications 1.5 - 2.5 bar: 50 Applications 2.5 - 4.0 bar: 50 Applications above 4.0 bar: 50	Demand pressure (Pm) Number of times the pressure exceeded 9.0 bar: 50 Distance stamp: 50	Brake application counter Applications below 1.5 bar: 100 Applications 1.5 - 2.5 bar: 100 Applications 2.5 - 4.0 bar: 100 Applications above 4.0 bar: 100	Demand pressure (Pm) Number of times the pressure exceeded 9.0 bar: 100 Distance stamp: 100
ABS counter ABS events: 50	ODO km ODO km value: 100	ABS counter ABS events: 100	ODO km ODO km value: 100
RSP related counters RSP step 1 intervention (onset-2.0 bar): 50 RSP step 1 intervention (2.0 - 4.0 bar): 50 RSP step 1 intervention (above 4.0 bar): 50 RSP step 2 intervention: 50 RSP step 3 intervention: 50 RSP test pulse counter: 50	Travelled distance With the load less than 20%: 50 With the load in the range 20% to 40%: 50 With the load in the range 40% to 60%: 50 With the load in the range 60% to 80%: 50 With the load in the range 80% to 100%: 50 With the load in the range 100% to 110%: 50 With the load in the range 110% to 120%: 50 With the load greater than 120%: 50	RSP related counters RSP step 1 intervention (onset-2.0 bar): 100 RSP step 1 intervention (2.0 - 4.0 bar): 100 RSP step 1 intervention (above 4.0 bar): 100 RSP step 2 intervention: 100 RSP step 3 intervention: 100 RSP test pulse counter: 100	Travelled distance With the load less than 20%: 100 With the load in the range 20% to 40%: 100 With the load in the range 40% to 60%: 100 With the load in the range 60% to 80%: 100 With the load in the range 80% to 100%: 100 With the load in the range 100% to 110%: 100 With the load in the range 110% to 120%: 100 With the load greater than 120%: 100
Number of power cycles ISO7638 (no CAN communication): 50 ISO7638 (with CAN communication): 50 ISO1185: 50	Last reset distance Distance travelled since the last reset: 50	Number of power cycles ISO7638 (no CAN communication): 100 ISO7638 (with CAN communication): 100 ISO1185: 100	ECU km count ECU km count after module replacement: 800
Miscellaneous ADL counter: 50 TA counter: 50		Miscellaneous ADL counter: 100 TA counter: 100	
<input type="button" value="Reset ODR"/> <input type="button" value="Create Report"/> <input type="button" value="Close"/>		<input type="button" value="Create Report"/> <input type="button" value="Close"/>	



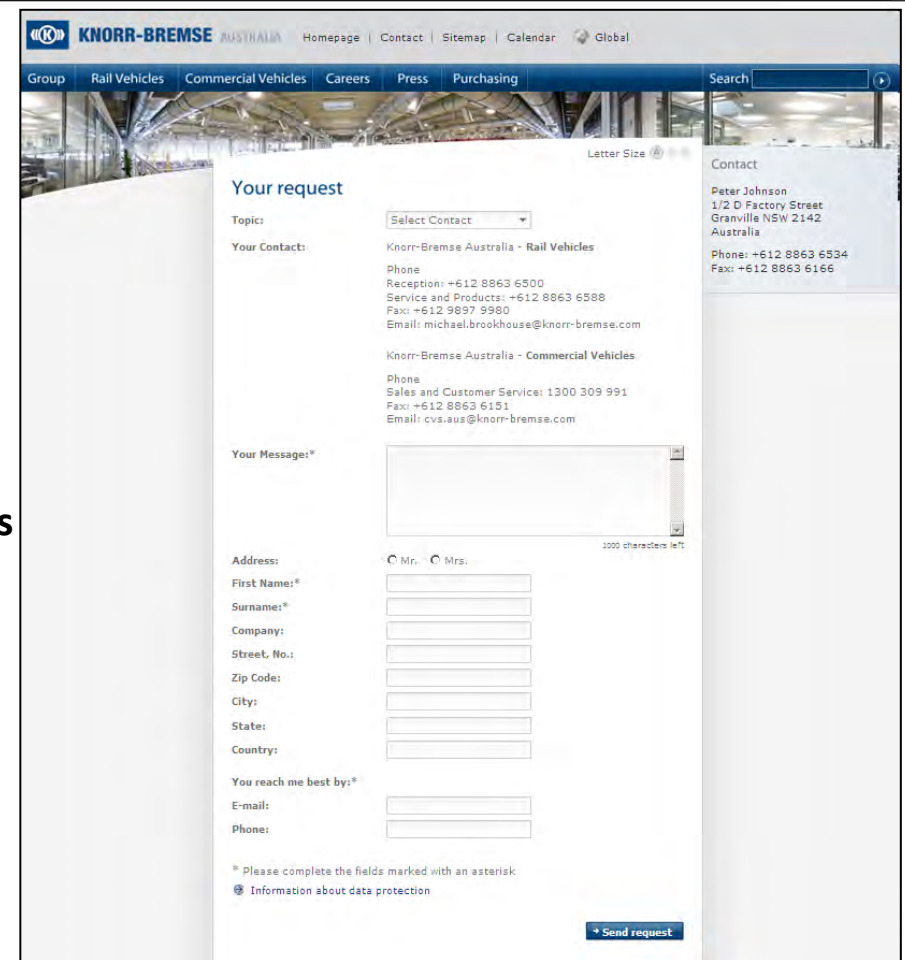
2: TDR Interpreter – TIM G2

- Trailer Information Module (TIM) Diagnostic Features
- Optional: Trailer Drive Recorder (TDR) Interpreter Software



3: Field Support

- Direct to Manufacturer
- Office & Warehousing Australia Wide
- Extensive Range of Distributors & Service Agents
- Knorr-Bremse Customer Service 1300 309 991



The image shows a screenshot of the Knorr-Bremse Australia website's contact form. The header includes the Knorr-Bremse logo and navigation links: Homepage, Contact, Sitemap, Calendar, and Global. Below the header is a blue navigation bar with links for Group, Rail Vehicles, Commercial Vehicles, Careers, Press, and Purchasing. A search bar is located on the right. The main content area is titled "Your request" and features a "Select Contact" dropdown menu. Below this, there are two sections for contact information: "Knorr-Bremse Australia - Rail Vehicles" and "Knorr-Bremse Australia - Commercial Vehicles". Each section lists phone, reception, service and products, fax, and email numbers. A "Your Message:" text area with a character count (1000 characters left) is provided. Below the message area are fields for "Address:", "First Name:", "Surname:", "Company:", "Street, No.:", "Zip Code:", "City:", "State:", and "Country:". There are also radio buttons for "Mr." and "Mrs.". A "You reach me best by:" section includes fields for "E-mail:" and "Phone:". A footer note states: "* Please complete the fields marked with an asterisk." and a link for "Information about data protection". A "Send request" button is at the bottom right.

KNORR-BREMSE AUSTRALIA Homepage | Contact | Sitemap | Calendar | Global

Group | Rail Vehicles | Commercial Vehicles | Careers | Press | Purchasing | Search

Letter Size

Your request

Topic:

Your Contact:

Knorr-Bremse Australia - Rail Vehicles

Phone
Reception: +612 8863 6500
Service and Products: +612 8863 6588
Fax: +612 9897 9980
Email: michael.brookhouse@knorr-bremse.com

Knorr-Bremse Australia - Commercial Vehicles

Phone
Sales and Customer Service: 1300 309 991
Fax: +612 8863 6151
Email: cvs.aus@knorr-bremse.com

Your Message:*

1000 characters left

Address: ☐ Mr. ☐ Mrs.

First Name:*

Surname:*

Company:

Street, No.:

Zip Code:

City:

State:

Country:

You reach me best by:*

E-mail:

Phone:

* Please complete the fields marked with an asterisk.
[Information about data protection](#)

[Send request](#)



4: Safety Direct

- Back-to-base Telematics from a single supplier

